

WEST WING GALLERY TRACK LIGHTING SPECIFICATIONS

Specifications for the track lighting available to order as a lighting package are as follows. Any additional light requests are allocated on a first come first serve basis. Your Project Manager will discuss this with you when you place your lighting order.

Please note, asside from the standard lighting packages avilalable to you for your space, other more bespoke lighting is available, (e.g Beamshapers, PAR 16, diferent colour temperature, bespoke lighting installation etc.) If you have a bespoke request, please complete this on your **Lighting Order Form** and London Design Biennale will put you in direct contact with a specialist at Beam Lighting for a bespoke quote.

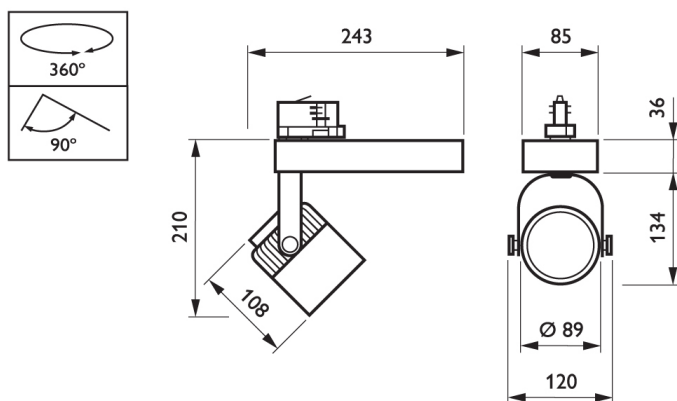
Location	West Wing (Rooms 1-14)
Code	ECO
Type - all track mounted fittings	Phillips - LED ECO-style
Description	Track mounted spotlight. Very bright display style lamp with a cool white colour temperature. Washes walls very well. Not dimmable
Colour Temperature	4000k
Wattage	36 w
Type	Wash Light



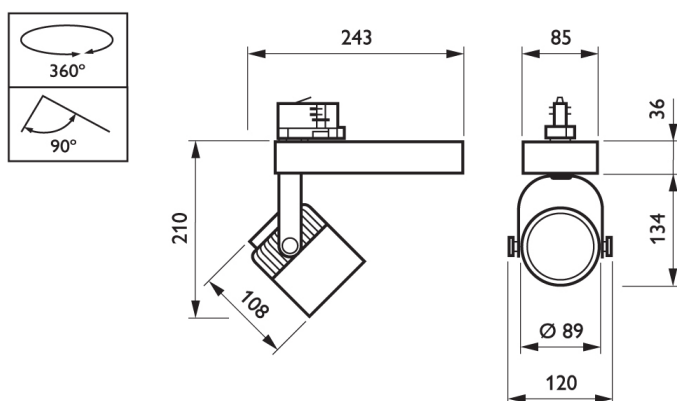
RANGE FEATURES

- Efficient LED light source
- Dedicated reflector system
- Good-quality accent lighting
- Track-mounted
- Innovative heatsink
- 1800 Lm
- 220-240V

Dimensional drawing



ST340T



ST340T